

2007.10.02



ACMI Screen Lounges: Progress report on design

From Crowd Productions: A report on progress and outline of research, design and construction work to 07.10.2002

01.] **Consultation with ACMI Stakeholders: Meeting with John Smithies, Victoria Lynn, Ross Gibson, Gael McIndoe, David Watson, Michael Parry from PivoD and CMR.**

23. 09 02. On Monday 23 September we met with ACMI stakeholders and CMR to discuss the development of the Screen Lounge design. John has asked to have the Screen Lounge test bed prototype moved to Federation Square for appraisal from the perspective of how they will be sited at Federation Square. This evaluation will be about physical size and location and will not include an audio component. Initially the two seater will be taken to Federation Square. Then it will be reconfigured as a six seater. Tests will be done with regard to seating comfort for viewing and the issue of head position and comfort. CMR will check on IR issues. The proposed Federation Square location is currently available until the 12th of October. It is then booked until the end of October. The intention is to move the prototype in the week commencing the 30th of September. The acoustic partition screen will also be located at Federation Square for design evaluation and checking its stability on the site floor surfaces. Crowd will develop a new time line based on a sign-off the final design by ACMI on Monday October 14, based on completion of the evaluation at Federation Square. [See item 06] Crowd will proceed with mocking up an inflatable ceiling prototype, drawing up an extendable scissor action delivery arm, fabricating three more Soonas and responding to the Memory Grid brief with a design proposal. Crowd will check fire-rating issues with regard to proposed upholstering materials within the Screen Lounge Pods.

It was agreed by John that as the Screen Lounge [formerly Games Lounge] plan has been approved we could begin construction drawings and commence preliminary construction work involving pattern and mold making for the Screen Lounge Pods in this area. Simon Banks has advised us that we should proceed as quickly as possible with procurement of the AV technology for the six seater test and for inclusion in first production Screen Lounges as there can be considerable delays at this time of the year.

02.] **Goodbye and Thankyou to Ross Gibson.**

The 23.09.02 meeting was the last at which Ross Gibson will be attending. We would like to thank him very much for his involvement and support from the outset of this project. His clarity and input in determining design development and his desire to act as a bridge in developing links within ACMI has helped enormously in progressing the project to the current stage. We wish him well in his new projects.

03.] **Report on Design Progress: Further refining and development of the Woven Way finding Partition Screens.**

Wendy Golden has continued to do full scale mock-ups and material tests for the design and construction of the Woven Partition Screens. She is now experimenting with a wider range of material diameters and we feel we are getting very close to the desired outcome. This is the third format we have developed for materials and texture. The current layering of material thicknesses has produced a denser texture while still delivering a public space sized scale with a thick main support grid. The experimentation has led

to the development of a new technique that will reverse the current assembly process. This new technique should further refine the finished appearance. The next prototype will be produced on a production frame.



Details of the third development of the Woven Way Finding Partition Screen.

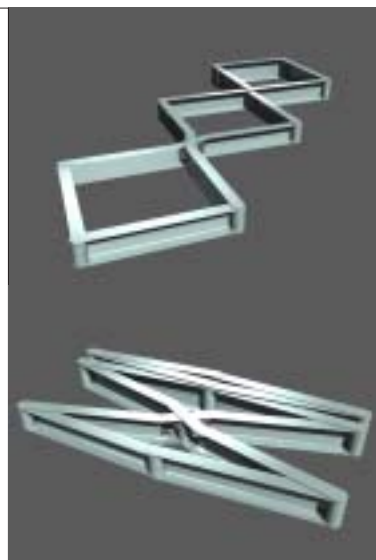
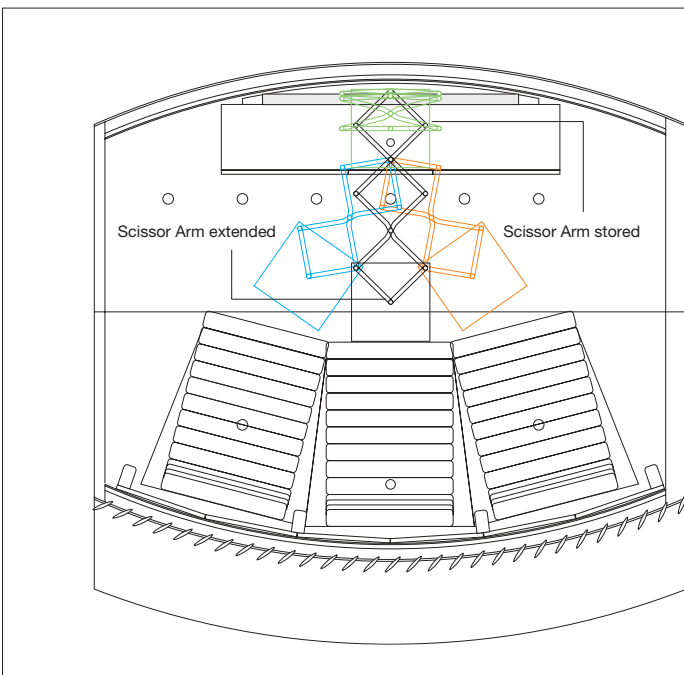
04.] Report on Design Progress: Developing the colour palette for the Screen Lounge interiors.

Following on from the fabric testing and prototyping done in the Screen Lounge Test Bed Prototype we have selected the optimal fabrics in terms of impact, performance and fabrication. Following a request from CMR we will also further check the fire rating of the selected fabrics. Below is a sample of the proposed colour ways: red, green, blue and black and white. Our proposal is that Blue be used for the memory Grid Lounges, green and red for the Screen Lounges in the Memory Grid Lounge and black and white be used for the convertible Games Lounges in the Screen Lounge. Within a given colour palette each lounge will have its own character, making each one unique

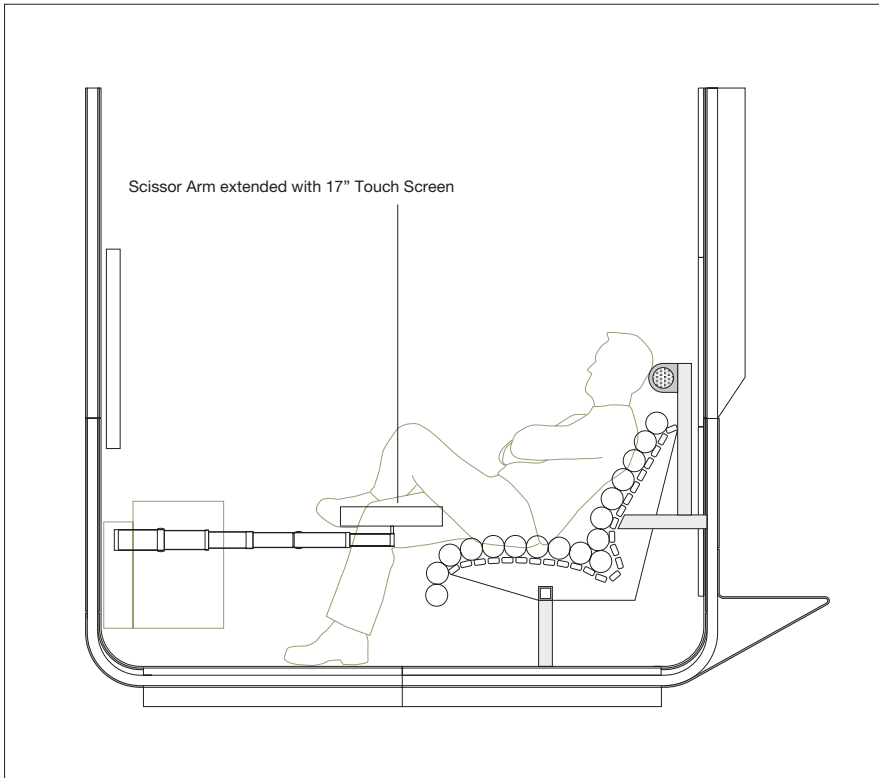


05.] Report on Design Progress: Designing the delivery system for the control Touch Screen.

Following the meeting on 23.09.02 with John Smithies and ACMI stakeholders we are developing a final design for the telescopic arm to deliver the 17" Touch Screen to the users of the Screen Lounges. The arm has to travel a distance of 1050mm and yet retract down into a very limited storage space with a length of 300mm and as small a width as possible. It has to swivel about a centre in the horizontal plane by 70 degrees to allow uniform access to all the participants in the Screen Lounge. It has to be strong enough to sustain continual use in a public environment and be both somehow conceivably domestic [if only in a futuristic sense] and be able to be fabricated within the screen Lounge budget. In consultation with our research engineer Anthony Kitchener, from cash Engineering Research, we have developed a Scissor Arm delivery system.



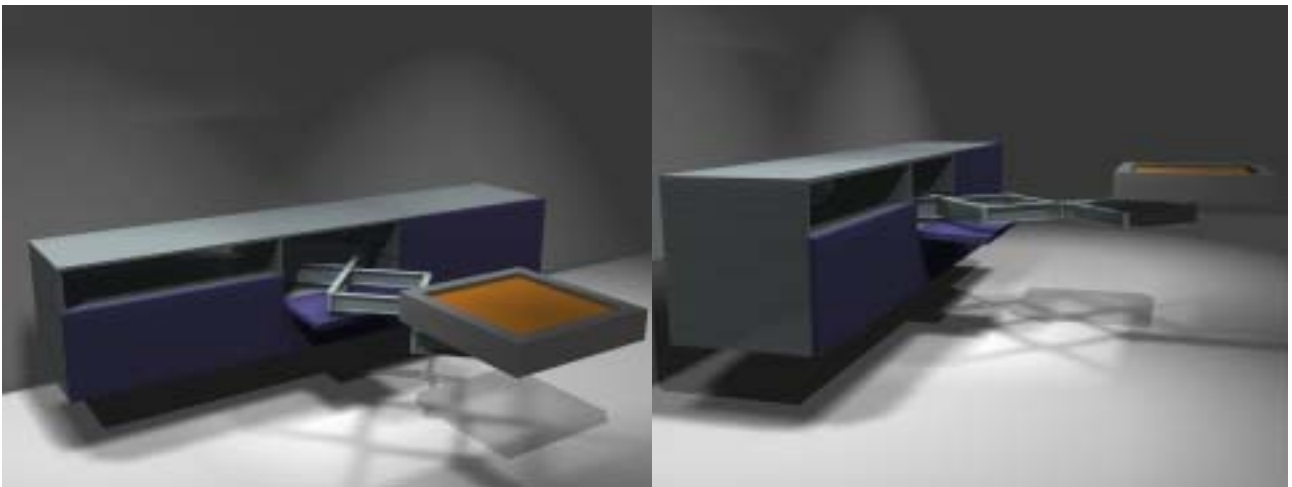
Above: Visualisation of the core scissor arm mechanism. Left: Plan of Scissor arm mechanism and 17" Touch Screen showing its horizontal swing to service all seats in the Screen Lounge Pod.



Left: Elevation/section of Scissor arm mechanism and 17" Touch Screen showing its horizontal swing to service centre seat in the Screen Lounge Pod. Final height of Touch Screen, delivery arm and mantle piece to be confirmed through testing.

Below: Visualisations of the mantle piece/control console with the scissor arm and 17" Touch Screen extended.

Bottom: Visualisation of the mantle piece/control console with the scissor arm and 17" Touch Screen extended seen within a three seater Screen Lounge Pod.



06.] A Third Revised Timeline for Prototyping and fabricating the Screen Lounges.

Here is the new time line for prototyping and production of ACMI Screen Lounges from Crowd productions in response to a request for a third amended job schedule on 23.09.02 by CMR. To establish a workable new delivery date we will need to contact all sub contractors and negotiate new schedule allocations. It is also very important to note the this timetable is predicated on continuing discussions with PiVoD, the appointed contractor to design and produce the technology for the Screen Lounge functionality, so that we can design to properly accommodate that functionality. **Manufacturing and fabrication time is at a premium in the last calendar quarter as customers rush to complete end of year deadlines. As shown below our time line is now also intersected by the Christmas and January holiday period. As previously stated this will create an interruption to any fabrication schedule that is beyond our control.** We need to be careful to avoid any compromise of the careful process of consultation, design and executing the first Screen Lounge prototype by either not selecting the best subcontractor or rushing a significant process, all for the sake of a short time gain at the end of a lengthy process. We advise that while every effort will be made to accomplish the schedule outlined below we may need to extend the delivery time.

NB: All dates subject to change based on client approval and subcontractor availability.

Time line /Job Schedule for ACMI Screen Lounges at 30.08.02

01.] Client Briefing sessions:	Monday 30.09.02 to Friday 14.10.02
02.] Designing, detailing, quoting, fabricating and installing additional elements to existing prototype for acoustic, spatial, operational and comfort evaluation:	Monday 30.09.02 to Friday 07.10.02
03.] Client evaluation of Screen Lounge Pod:	Monday 30.09.02 to Friday 14.10.02
04.] Detail design from prototype development to resolve for commencement of construction drawings:	Monday 02.09.02 to Friday 14.10.02
05.] Date for approval of Prototype at mock up stage to proceed to full production standard prototype:	Monday 14.10.02
06.] Commence construction drawings:	Monday 14.10.02
Construction drawings:	Monday 14.10.02 to Friday 08.11.02
07.] Commence construction of first production standard prototype, including pattern making, mould making, testing and tooling:	Monday 11.11.02
08.] Construction of first production standard prototype, including pattern making, mould making, testing and tooling:	Monday 11.11.02 to Friday 20.12.02
Christmas Break: no construction or fabrication available from suppliers during this period	Monday 23.11.02 to Friday 01.02.03
08A.] Construction of first production standard prototype continues, including pattern making, mould making, testing and tooling:	Monday 03.02.03 to Friday 14.03.03
09.] Commence on-site testing of first prototype:	Monday 17.03.03

07.] Report on Design Progress: Fabrication of a Prototype Screen Lounge Pod Inflatable Ceiling.

24.09.02. Pursuant to conformation of assent to our Request For Purchase 07 we have commissioned Bedgood Industries in Bayswater to make a prototype inflatable ceiling for a three seater Lounge Pod. This will be made of translucent PVC and is primarily designed to test the design and shape and visual impact of the inflatable ceiling. No final determination has been made about the material for the production ceilings for the Screen Lounge Pods. We hope to trial this ceiling at Federation Square prior to the Screen Lounge Pod Test Bed Prototypes conversion from a two seater format to a six seater format.

08.] Report on Design Progress: Moving the Screen Lounge Prototype To Federation Square.

Following the meeting on 23.09.02 with John Smithies and ACMI stakeholders where it was decided to relocate the Screen lounge prototype from VECCI to Federation Square, as the final part of the sign off process by ACMI on the design of the physical form and dimensions of the Screen Lounge Pod design, we have now negotiated directly with representatives from the Federation Square site to move the Prototype. The intention of this exercise is to see how the volume of the Screen Lounge Pods sit within the Memory Grid Lounge space and to determine the best orientations and positions for them. Once this has been done for the Two seater format the Screen Lounge Pod prototype will be reconfigured into the six seater format to ascertain how it also sits within the allotted space. Additional seating has been prepared for this conversion and we intend to fit out the six seater format for evaluation by ACMI stakeholders of this larger format in terms of the two screen layout, size and viewing comfort. This will represent the final test of the seating design and the overall volume design. Additional to the Screen Lounge Pod we are also installing the prototype Acoustic Partition Screen prototype to test its scale, design and stability within the Federation Square environment.



Documentation of the installation of the Screen Lounge Pod two seater test bed prototype and the Acoustic Partition Screen prototype into the Memory Grid lounge at Federation Square.



09.] **Acoustic Partition Screen at ACMI, Federation Square.**

Along with the relocation of the screen lounge to ACMI was the arrival of the first acoustic partition screen.

Issues have been raised regarding stability and size of the partition screens. We are looking forward to the testing of the stability issue on the finished floor surface but at this stage we are confident, having completed some initial testing on the computer flooring panels at ACMI. We are enthusiastic to maintain a high degree of flexibility with the partition screens and this appears to be achievable given the stability of the stand alone screen.