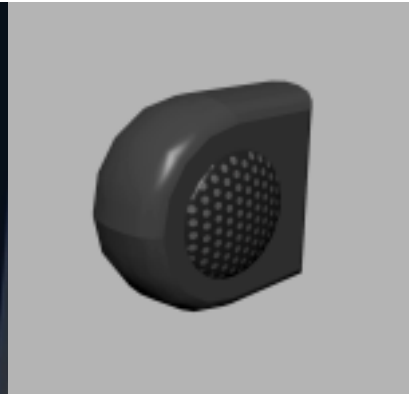
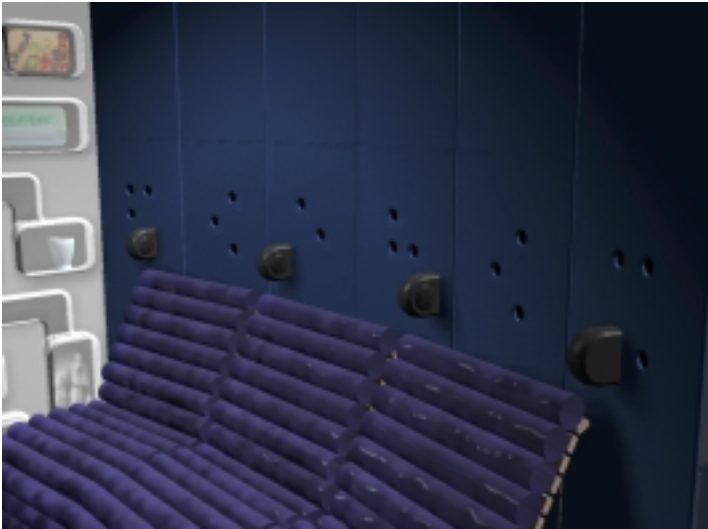


19 23.09.02



ACMI Screen Lounges: Progress report on design

From Crowd Productions: A report on progress and outline of research, design and construction work to 23.09.2002



The primary visualisation of the proposed personalised speaker system for the Screen Lounge Pods to develop a better sound field for the users

01.] Consultation with ACMI Stakeholders: Meeting with John Smithies, Victoria Lynn, Gael McIndoe, David Watson and CMR.

16. 09 02. On last Monday a meeting was held with ourselves and ACMI stakeholders to discuss the response to the prototype Screen Lounge Pod physical design and the proposed Games Lounge [now to be known as the Screen Lounge and former Screen Lounge to be known as the Memory Grid Lounge]. John had spent some time test driving the prototype Screen Lounge Pod. John is satisfied with the spatial arrangement with regard to size, shape, screen distance and placement, foot room and mantle piece/technology boot design. With regards to the seating John is happy with the performance of the Soona. He feels the bread board seat extender does not work and it might be best to delete it. He would like a head rest and possibly arm rests. We explained that the open bench seating was designed to be much more informal than theatre seating and every effort has been made to avoid enclosing individual seats. We will look at whether we can include arm rests at the ends or develop an acceptable cushion solution. It was agreed that all the two seater lounges would become three seater lounges. John feels that the seating needs to be more inclined or laid back. He would like to see the seating set up in the six seater configuration with the higher screen placement. To this end John is keen to see the prototype Screen Lounge Pod set up at Federation Square. Crowd was advised to talk to Tony Batt about the logistics of this move. In conversation with Tony he has advised us that any construction work done at Federation Square will need to conform to site work regulations. Tony suggests that we use the same removalists to move the prototype who have been involved in moving ACMI furniture into Federation Square. It is also possible that the proposed site for the prototype at Federation Square may be required as part of the Spar conference floor area for a while.

Sound in the Screen Lounge Pod prototype is an area of concern. We have been in discussion with PiVoD [see item 02] and further,

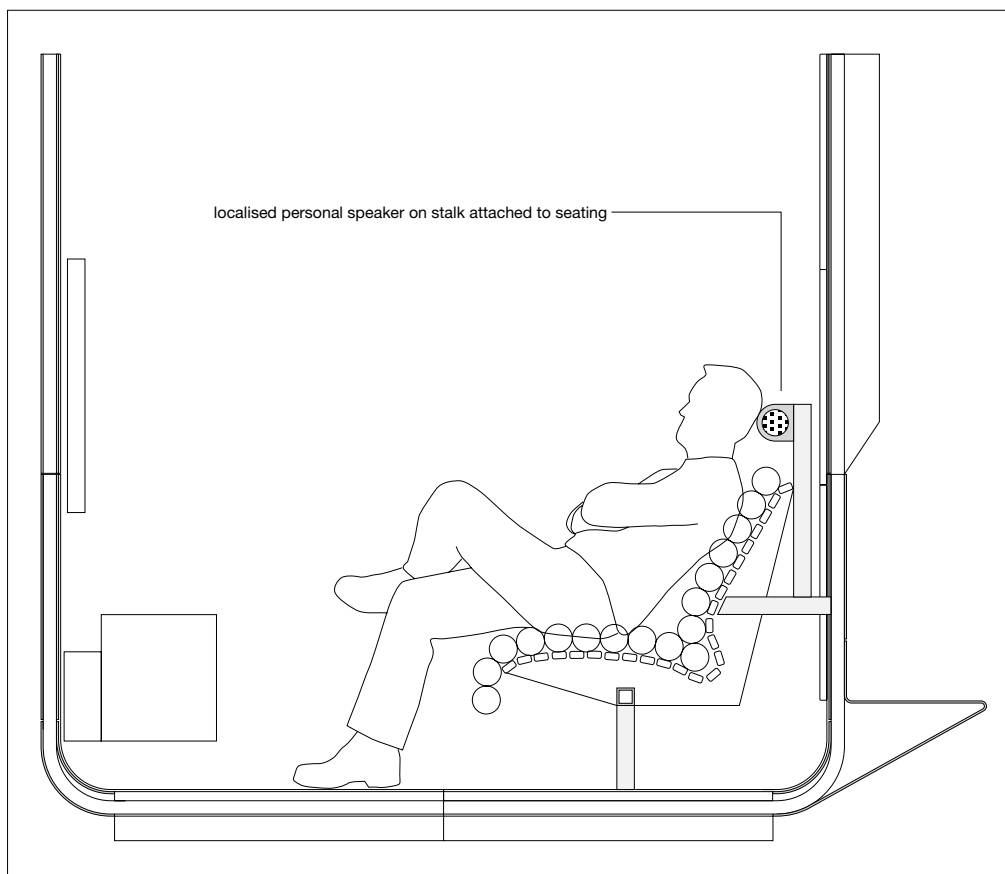
PiVoD are in discussion with Lake Audio who may be interested in sponsorship. To further enhance the audio experience we suggested the provision of a headphone jack. Members could bring their own head phones. Victoria suggested that ACMI could sell headphones and possibly commission Susan Cohn to design some special ones and ACMI could approach Sony for sponsorship. Crowd will contact Susan Cohn on her return from overseas to see if she is interested.

The proposed layout for the games Lounge/Screen Lounge room was accepted and it was discussed that an additional public access screen be included in the northern part of the room along with a foot note screen and a possible brochuring point. This northern public access screen will be visible from the dining area and enhance the appeal of the space as well as providing a point to present information on the Screen Lounge concept, how to access them and information on the history and available range of games.

02.] Report on Design Progress: Developing the Screen Lounge Pod sound system.

12.09.02. In a meeting with Graeme McGeorge and Michael Parry from PiVoD the design and implementation of an appropriate sound system was discussed. After discussion with John Smithies, Graeme suggested a speaker arrangement reminiscent of the speaker systems found in first class air craft seating. Localised speakers are placed at ear height on either side of the seat. In the Screen Lounges these speakers will be housed in barnacles that project from the upholstered panels that line the wall behind the seating. The sub bass component of the sound will be delivered by an omni directional sub bass speaker under the seating with the further possibility of providing a transducer attached to the seat base for additional sound experience enhancement. In this event the seats will be mounted on rubber dampers to isolate the vibration and prevent it from travelling through the floor.

Additional sound may be provided by speakers mounted on either side of the plasma monitor. If these are employed, the speakers beside the seating will have a built in delay to help establish for the listener that psycho-acoustically the sound is coming from the same source as the vision. By this configuration high quality sound fields can be delivered to the listener at a low volume that will still mask out unwanted incidental sound from the surrounding environment. Graeme from PiVoD is pursuing Lake Audio about the practicalities and technical details for such a system.



Section showing second proposal for localised personal sound field system for users of the Screen Lounge Pods. The speakers are mounted on stalks connected to the seating. The base of these stalks also acts as the stabilising tabs that fix the seating units to the wall.

03.] **Consultation with ACMI Stakeholders: Formulating the Memory Grid and Education Brief.**

11.09.02, Wednesday. A meeting was held with ourselves, Gael McIndoe, Astrid Scott, Craig Forsyth and David Watson from ACMI and Graeme McGeorge and Michael Parry from PiVoD to discuss the brief for the two Memory Grid Lounges.

01.] The added functionality required for the Memory Grid Lounges must accommodate access to curated web sites, CD Rom artwork files, video on demand, cached games and possibly web games and provide an editing suite and production facility including camera, blue screen background and appropriate lighting.

02.] It was agreed that the three seater format of the lounge pod designs would be appropriate.

03.] The Memory Grid Lounges will need a larger mantle piece/technology boot than the Screen Lounges. In consultation with Graeme and Michael it was agreed that extending the existing mantle piece towards the wall away from the entry wall by 400mm should provide the necessary space while retaining the current cross section. It was agreed that retaining the domestic character of the interior was important and that inserting rack mounting systems that obscured the translucency of the end wall or introduced a highly technical element was not desirable.

03B.] If the Memory Grid Lounges are not to be moved often or moved out of the building it is possible that some of the technology could be contained in an external mobile rack, a puppy. While this is not seen as a first option for a design solution it may be a valuable for use at some latter point.

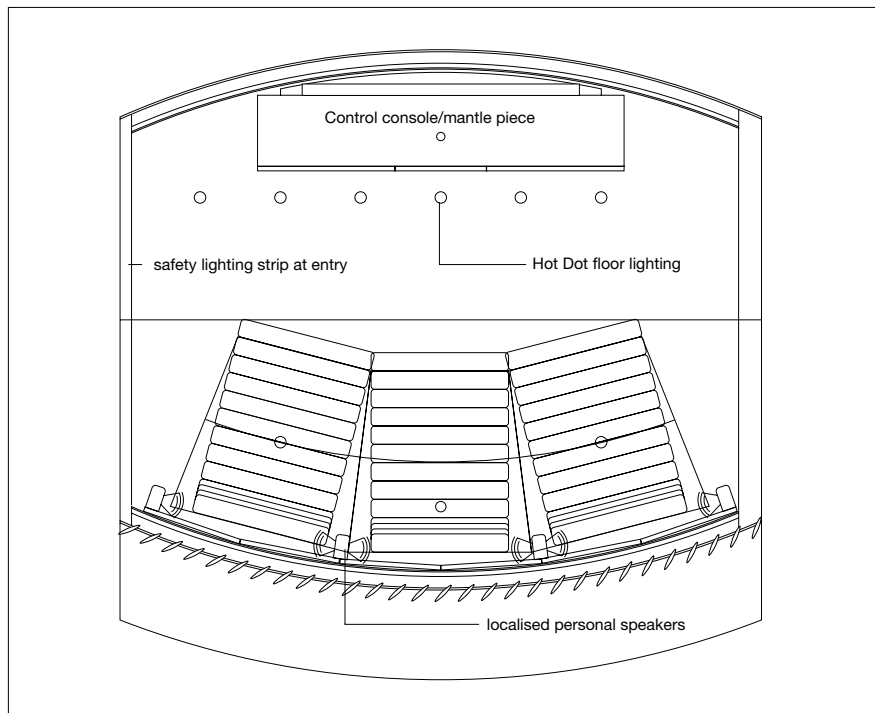
04.] It was agreed that the production camera will be mounted above the plasma monitor and directed towards the existing seating. The camera will have a pan and tilt head, probably software driven. The camera can be used for head and shoulders portraiture and for photographing discrete body parts.

05.] Production mode lighting including colour corrected diffuse key light and possible back ground wall wash fill lighting will be also preset and software controlled.

06.] The wall behind the seating will be chroma key blue and the seating upholstery will be in a non reflective blue fabric.

07.] The Memory Grid Lounges will have associated partition screens that brand or identify these lounges as free to enter; "experience convergence for free", and inviting participation.

Plan of the Screen Lounge Pod showing the layout of the proposed lighting grid in the floor and the location of the localised personal sound field speaker system for users of the pods.



04.] **Report on Design Progress: Developing the Lighting for the Screen Lounge Pod.**

We are detailing the internal lighting layout for the Screen Lounge Pods in order to solicit feedback from ACMI stakeholders and to obtain accurate quotes for the work involved. As previously stated the proposed lighting systems for the Screen Lounge Pods consist

of four elements:

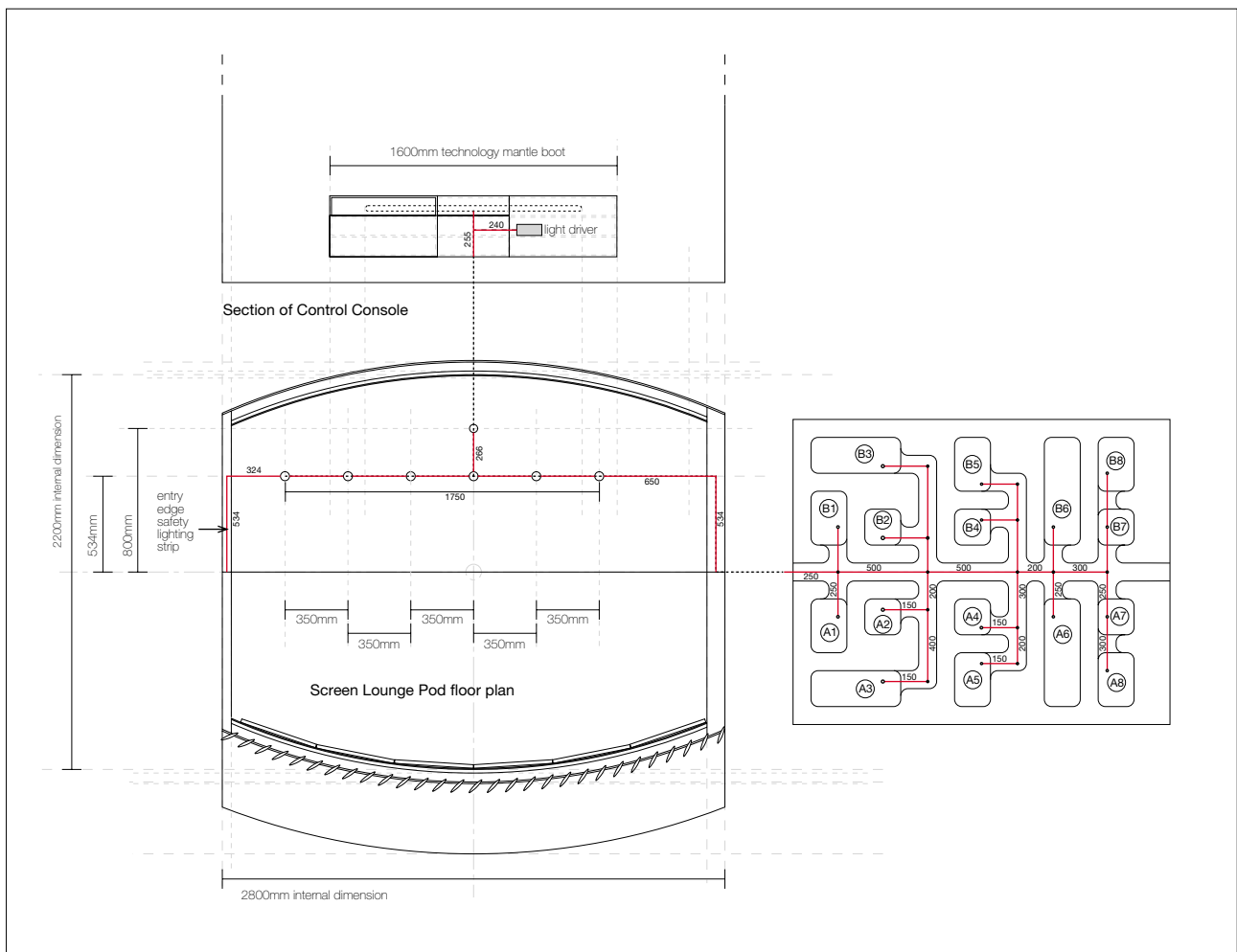
01.] A threshold safety lighting strip in the floor at the entrance

02.] A row of Hot Dot floor lamps to provide a clear and safe light guide inside the Screen Lounge Pod.

03.] A Fibre Optic system and light driver for the Blisterpack Memory Wall

04.] A wall wash light mounted behind the control console/mantle piece to reduce excessive contrast between the TV image and the surrounding wall.

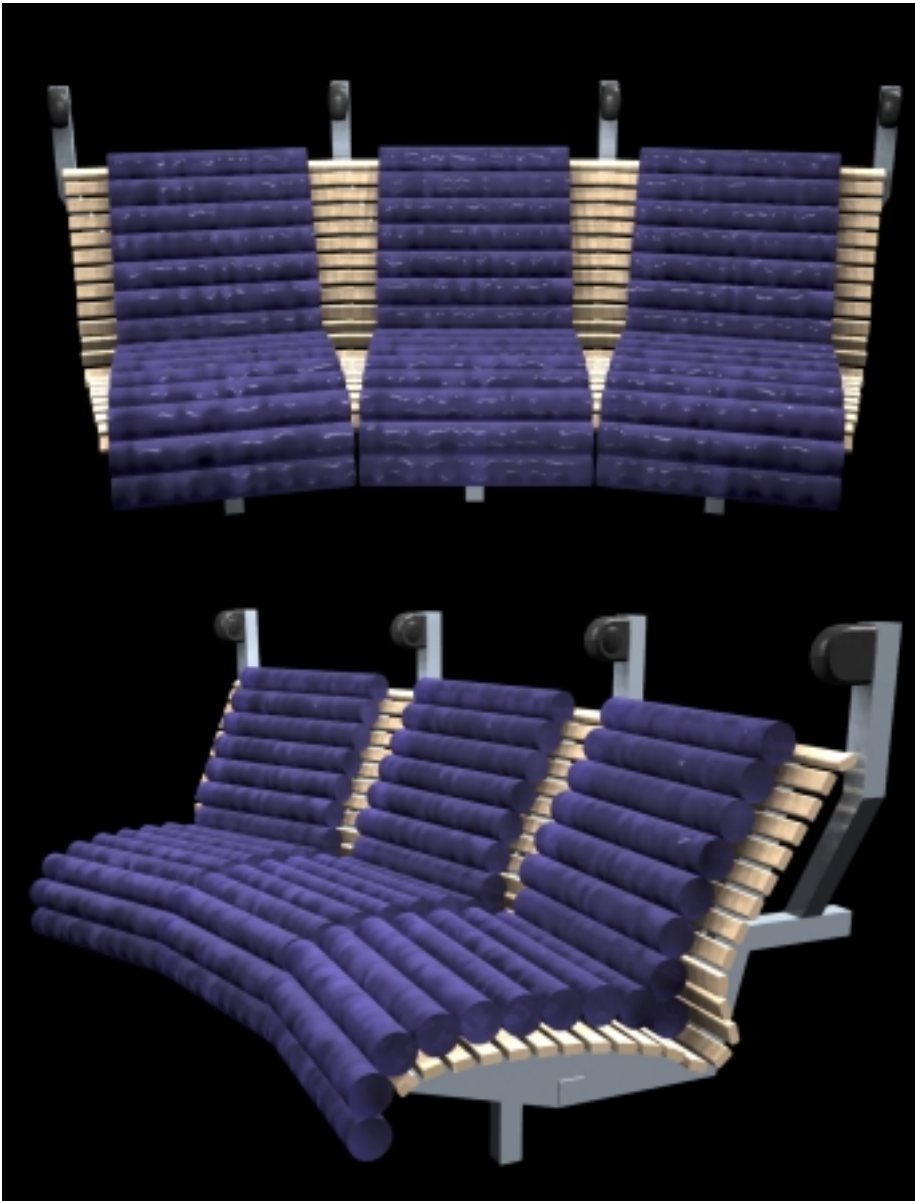
The intention is to have all lighting wiring in the lower quarters of the Screen Lounge Pod modules so that no wiring is involved in the dismantling and change from the full Screen Lounge Pod configuration to the convertible mode. This means all interior lighting will be floor mounted or be wall wash. It is also proposed that all the lighting could be fibre optic with one central light driver for easy maintenance. The light driver would be housed in the control console. The floor mounted lights are reminiscent of runway landing lights. They also evoke the isle lighting found in darkened theatres used for the same reason. With regard to controlling the intensity of the viewing comfort wall wash light behind the television monitor we feel that this should probably have a control knob on the control console.



Proposed fibre optic lighting diagram

05.] **Report on Design Progress: Further research for the Screen Lounge Pod sound system.**

20.09.02. Graeme McGeorge from PiVoD has been researching possible speakers for the proposed new speaker arrangement for the Screen Lounge Pods. A new speaker about to be released by Sound and Vision appears to be appropriate. It can be mated to a reasonably compact sub bass speaker. Lake Audio have agreed in principle that they can provide the technology necessary to make our requirements achievable. To proceed further Lake need a Request for Quotation and PiVoD need a variation to their contract.



Visualisations showing the second proposal for localised personal sound field speaker system. The speakers are mounted on stalks connected to the seating. The base of these stalks also acts as the stabilising tabs that fix the seating units to the wall.

06.] Report on Design Progress: Design proposal for the Memory Grid Partition Screens.

Given that the provision of a production facility is the key distinguishing character of the Memory Grid Lounges and that this will require a chroma key blue background wall, it seems very logical to make blue the 'brand' colour for the Memory Grid Lounges. In developing colour schemes for the Screen Lounge Pods we decided to employ the three colours of additive colour synthesis: Red, Green and Blue. We have developed an egg-crate partition screen that maintains the themes of porosity and flow [in that this partition changes its porosity dramatically as the viewer passes by, emphasising the significance of the moving perspective]. The illustrated partition screen is fabricated in translucent coloured acrylic.

